



**EXCEPTIONAL CARE  
LEADERS IN RESEARCH  
PARTNERS IN WELLBEING**

**NORTHERN SYDNEY LOCAL HEALTH DISTRICT**

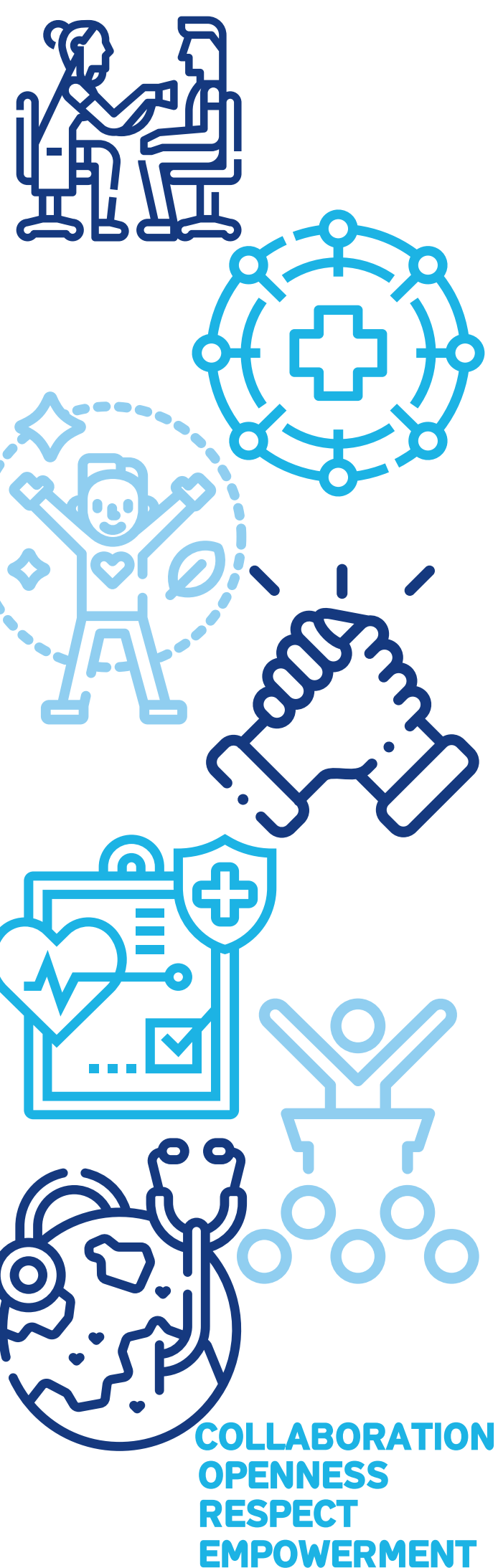
# **EXCEPTIONAL PEOPLE AWARDS**

**NOMINATION GUIDE AND FORM**

**for patients and consumers nominating staff and volunteers**



Northern Sydney  
Local Health District



## NORTHERN SYDNEY LOCAL HEALTH DISTRICT EXCEPTIONAL PEOPLE AWARDS 2023.

We are very excited to bring you the Exceptional People Awards 2023.

This awards program is one way in which we can formally recognise and thank our staff for the incredible work they do every day to deliver excellent health and wellbeing outcomes for our patients and consumers.

It is through the talents and efforts of our exceptional employees that we follow our purpose and deliver our vision.

**Our Purpose is:**  
**Transforming healthcare through  
innovation, research and partnerships, for  
our patients, community and staff.**

**Our Vision is:**  
**Exceptional Care, Leaders in Research,  
Partners in Wellbeing**

Any employee or volunteer can be recognised, from our dedicated front line clinicians through to our amazing support teams.

We are seeking nominations for those people you have interacted with in our district who may have brought new ideas and innovation to how we deliver our services, those who contribute their best every day, who go that extra step to make a difference.

Finalists will be invited to attend an award luncheon in March 2024 where the winners will receive their awards.

**Nominations open all year round, with  
those received being put forward for the  
upcoming annual event.**

The judges consist of a variety of General Managers, Senior Staff and the Executive across NSLHD, as well as Consumer representatives from the general public. To nominate a person or team, please complete the [online nomination form here](#). If you have any questions or require any help, please email [NSLHD-ODTeam@health.nsw.gov.au](mailto:NSLHD-ODTeam@health.nsw.gov.au).

**Anthony Schembri**  
Chief Executive, NSLHD

# AWARDS

The categories available for nominations by patients and consumers are based on our Strategic Plan and our CORE Values and Behaviours Charter. You can nominate more than one person or team, using a separate nomination form for each. All nominations for the Exceptional People Awards will be judged by a panel based on the criteria outlined after each category description:



## 1. Partnering with Consumers & Carers Award

An individual employee or team who has demonstrated active involvement, co-design and/or partnership with consumers/carers ensuring positive experiences of care. This award recognises those that have successfully involved consumers/carers in informed decision making about their care, and/or implemented service development initiatives and evaluation methodologies that incorporate consumer voice.

**This award is open for submissions for both teams and individual employees.**

CRITERIA	Weighting
<b>The extent to which the nomination demonstrates:</b>	
- Active involvement, co-design and/or partnership with consumers/carers ensuring positive experiences of care	20
- Involvement of consumers/carers in informed decision making about their care	10
- Implementation of service development initiatives and/or evaluation methodologies that incorporate consumer voice	10
<b>TOTAL</b>	<b>40</b>



## 2. Safe & Connected Care Award

An individual or team who has demonstrated safe, high quality, well-connected, inclusive and personalised care with good clinical outcomes. This award recognises those who have developed systems to support patients/consumers to better navigate the healthcare system across various healthcare settings leading to an improved patient/consumer experience of care.

**This award is open for submissions for teams, individual employees, volunteers or consumer advocates. A team winner, an individual winner, a volunteer winner and consumer nominated winner will be announced.**

CRITERIA	Weighting
<b>The extent to which the nomination demonstrates:</b>	
- Delivery of safe, high quality, well-connected, inclusive and personalised care with good clinical outcomes	20
- Implementation of systems to support patients/consumers to better navigate the healthcare system across various healthcare settings	10
- Delivery of improved patient/consumer experience of care	10
<b>TOTAL</b>	<b>40</b>



## 7. CORE Values & Behaviours Award

An individual or team who embodies the CORE values of the District. This award recognises an individual or team for consistently demonstrating positive behaviours that align with the NSW Health CORE values of Collaboration, Openness, Respect and Empowerment, thereby seeking to continue to build a more positive and inclusive culture by living the CORE values.

**This award is open for submissions for teams, individual employees, volunteers and consumer Advocates.**

CRITERIA	Weighting
<b>The extent to which the nomination demonstrates:</b>	
- Collaboration	10
- Openness	10
- Respect	10
- Empowerment	10
<b>TOTAL</b>	<b>40</b>



EXCEPTIONAL CARE  
LEADERS IN RESEARCH  
PARTNERS IN WELLBEING

# Staff Eligibility

Nominees must be either employees of Northern Sydney Local Health District, or HealthShare NSW and Pathology North employees whose work location is based at a NSLHD facility (either temporary, permanent, casual or on secondment from another NSW Health entity).

Volunteers and consumer advocates of Northern Sydney Local Health District can be nominated.

Nominees whose employment is subject to disciplinary action or investigation are not eligible.

Staff who are on the NSLHD Workforce and Culture Strategic Steering Group or members of the Executive Leadership Team (ELT) are not eligible to nominate or be nominated to avoid any conflict of interest, with the exception of the Leadership Award category, where members of these groups can be nominated.



# Nomination Guidelines

Entries for the NSLHD Exceptional People Awards are to be made as follows:

- › Entries can be made by NSLHD employees, volunteers and consumer advocates, patients and consumers and other NSW Health staff
- › Staff members cannot nominate themselves, or their own team
- › Entries from patients and consumers must be made using the online nomination form. Please click [here](#) to submit your nomination
- › Late and incomplete entries will not be considered
- › All finalists will be considered for appropriate external and statewide award programs
- › The judging panel reserve the right to verify the content and merit of entries with the individual or team's manager or service director
- › Previous winning projects/individuals are not to be re-submitted. However, where significant new developments have taken place (e.g. follow-up outcome evaluation of a previous project) an entry may be made provided that:
  - a) Substantial work involving new information, concepts or initiatives are presented, and
  - b) The entry focuses on the new work rather than re-presenting previous work
- › Each nomination is to be allocated into one category by the nominator. The judges reserve the right to change the category to which the nomination was allocated



To nominate a person or team, please scan the QR or visit <https://bit.ly/3MbIhDF> and complete an online nomination form. If you wish to nominate more than one individual or team, please submit a separate nomination form for each.

SCAN TO NOMINATE

